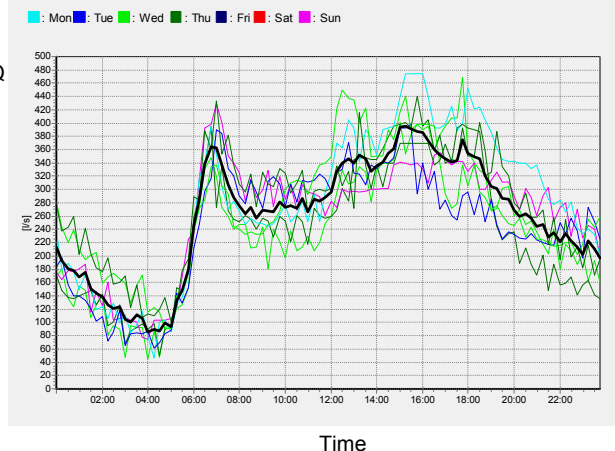
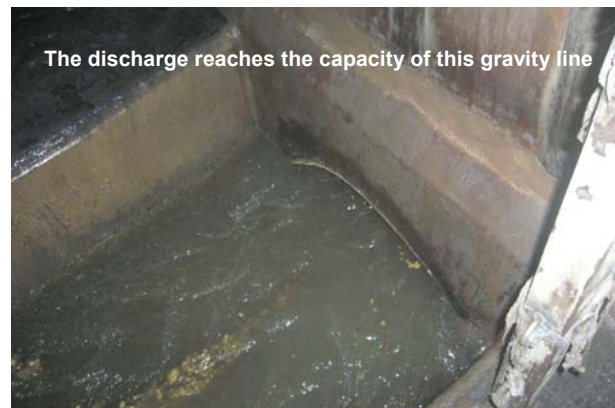


- Services
- Measuring Devices
- Software
- Inspection Entity

What happens in your network?

- **You need reliable flow data for the calibration of a hydraulic model or for operation of sewer or drainage networks?**
- **You want to locate the bottlenecks of your sewer system? Can you cover the additional discharge of future connections?**
- **You want to know more about the diurnal variation and the peak flows?**



Superposition of several dry-weather week days



Solution ...

Expert knowledge for special tasks



Depending on the individual site conditions we select the best method for the flow measurement and install our accurate working data loggers:



Flow measurement in gravity lines

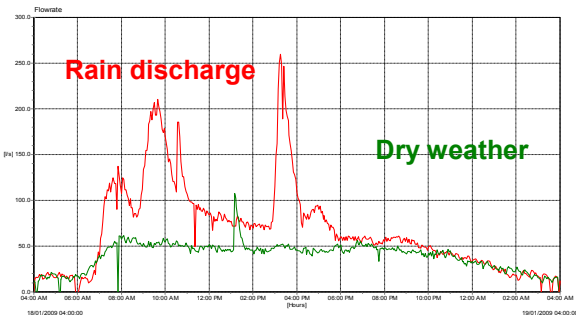


Flow measurements on pressure mains

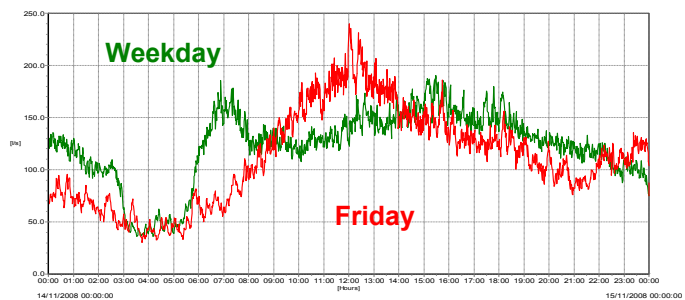


Calculation of discharges with flumes or weirs

Existing measuring devices that are operating accurately can be easily integrated easily into the flow measuring programme by simply connecting the to our data loggers!



Superposition of dry weather- and rain discharge



Superposition of hydrographs for weekdays and Fridays typical for Middle East

It would be a pleasure for us to present our company to you and discuss your specific measurement problems in a one on one discussion. If we have raised your interest, don't hesitate to contact us or our local partner:



W.A.S. GmbH
 Manama
 Kingdom of Bahrain
 Phone BAH: +973 178 206 -52
 Phone GER: +49 531 31039 -0
 Fax: +973 178 206 -53
 E-Mail: info@was-bs.de
 Internet: www.was-bs.de
 Registration: 71184



Bahrain Pipeline Construction W.L.L.
 Isa Town
 Kingdom of Bahrain
 Phone: +973 17401213
 Fax: +973 17402511
 E-Mail: bplcc@batelco.com.bh
 Registration: 23203